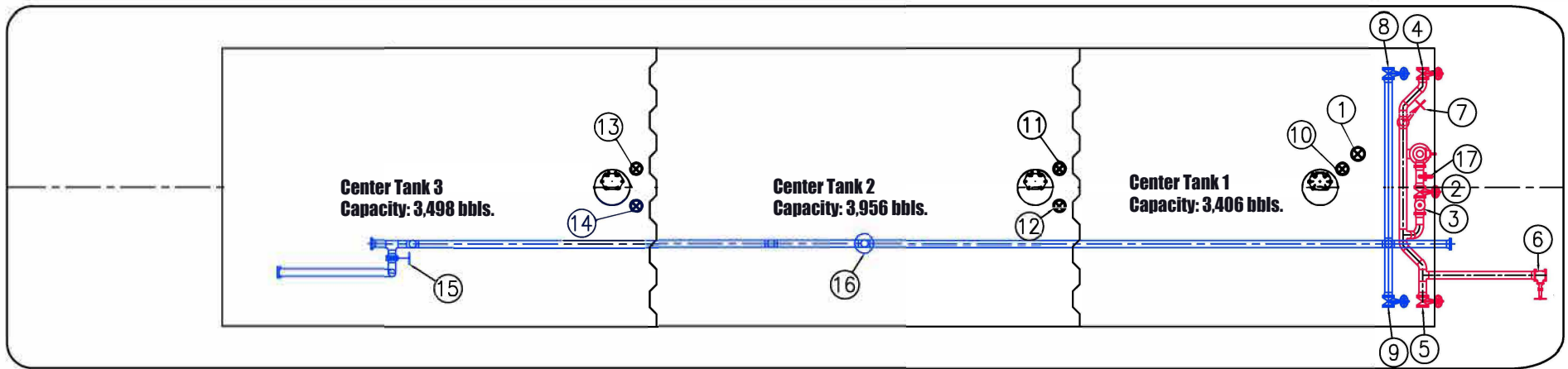


E2MS 100 Barge Pipeline Diagram



VALVE ARRANGEMENT	
1	CARGO PUMP SUCTION/BLOCK VALVE
2	CARGO PUMP DISCHARGE VALVE
3	CARGO PUMP CHECK VALVE
4	PORT CARGO HEADER VALVE
5	STBD CARGO HEADER VALVE
6	FWG CARGO HEADER VALVE
7	CARGO LOADING VALVE
8	PORT VAPOR HEADER VALVE
9	STBD VAPOR HEADER VALVE
10	CARGO VALVE-TANK 1C
11	CARGO TANK VALVE 2-C
12	TANK 1-C TO TANK 2-C SLUICE VALVE
13	CARGO VALVE-TANK 3C
14	TANK 2-C TO TANK 3-C SLUICE VALVE
15	VAPOR HEADER STACK BLOCK VALVE
16	VAPOR HEADER PV VALVE
17	CARGO PUMP RELIEF VALVE

CARGO & VAPOR PIPING DIAGRAM

VAPOR PIPE —
 CARGO PIPE —