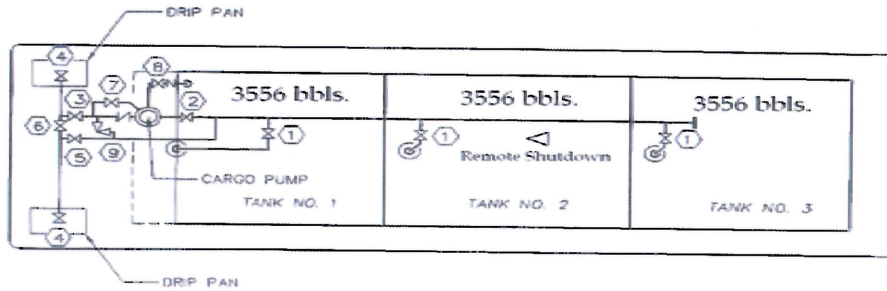


B 01B

RCT 7

- | | |
|--------------------------|----------------------------|
| 1 - CARGO TANK VALVE | 5 - CARGO FILL VALVE |
| 2 - PUMP SUCTION VALVE | 6 - HEADER CROSSOVER VALVE |
| 3 - PUMP DISCHARGE VALVE | 7 - PUMP BY-PASS VALVE |
| 4 - CARGO HEADER VALVE | 8 - VENT VALVE |
| | 9 - RELIEF VALVE |

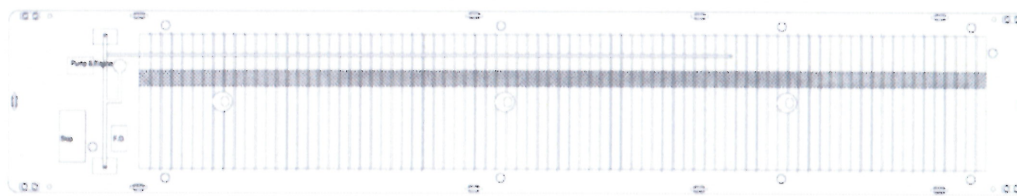
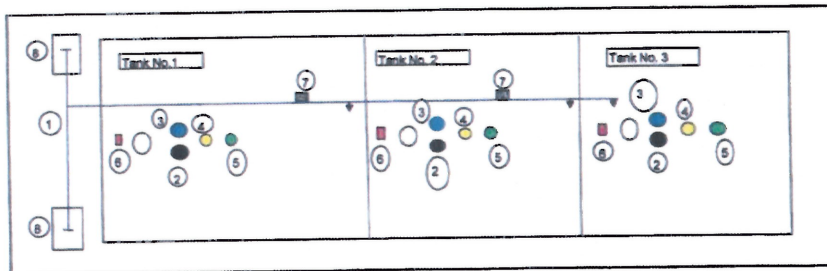


CARGO PIPING

RCT 7

Vapor Recovery Piping-System

- | | | |
|------------------------------|-----------------------------------|---|
| 1 - Vapor Header | 4 - Restrictor/Closed Gauging (3) | 7 - (2) 6" P/V Valves
1 LB. PRESSURE
8 OZ. VACUUM |
| 2 - High Level Alarms (3) | 5 - Open Gauging (3) | |
| 3 - High Level Dip Stick (3) | 6 - Sight Glass (3) | 8 - Drip Pans |



RCT-1, RCT-7, RCT-100, RCT-105,
RCT-106, RCT-108, FR-22
195' x 35' x 12' Double Skin Tank Barge
For reference purposes only. To be used as shown.
Typical RCT Barge W/O VCS
Drawn by: Matthew Kroll