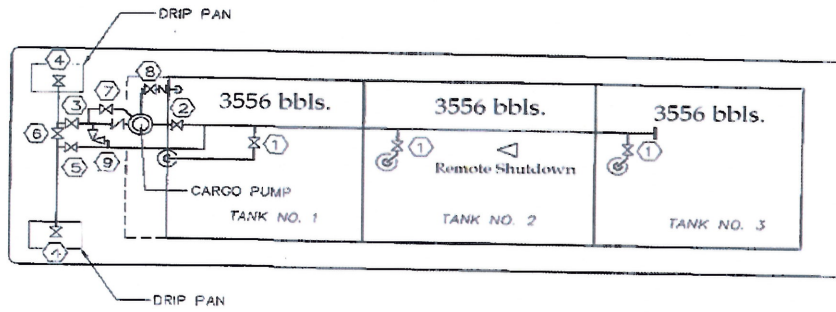


B 02B

RCT 12

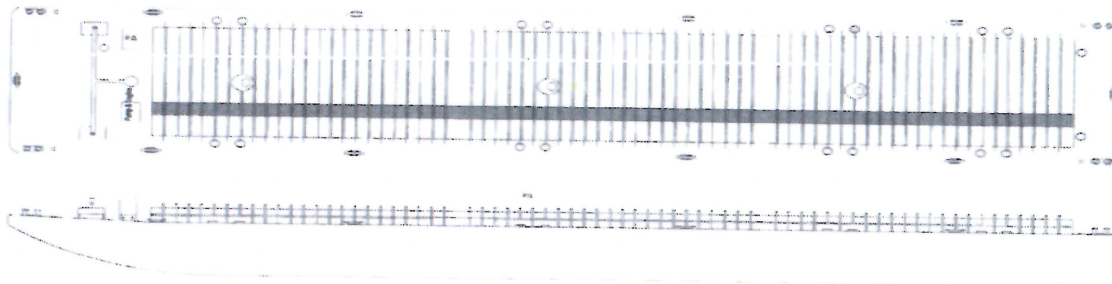
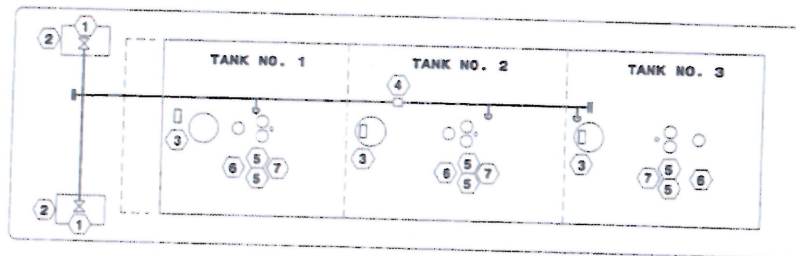
- | | |
|--------------------------|----------------------------|
| 1 - CARGO TANK VALVE | 5 - CARGO FILL VALVE |
| 2 - PUMP SUCTION VALVE | 6 - HEADER CROSSOVER VALVE |
| 3 - PUMP DISCHARGE VALVE | 7 - PUMP BY-PASS VALVE |
| 4 - CARGO HEADER VALVE | 8 - VENT VALVE |
| | 9 - RELIEF VALVE |



CARGO PIPING

RCT 12

- | | | |
|---|--|--------------------------------------|
| 1 - 8" VAPOR HEADER | 5 - LEVEL GAGES
DUAL DIP
STICK (3) | 7 - 2" B-TYPE VAPOR
CONTROL VALVE |
| 2 - DRIP PAN | 6 - ALARM SENSOR
HIGH LEVEL AND
OVERFLOW (3) | |
| 3 - SIGHT GLASS
WITH GAGE TREE (3) | | |
| 4 - 6" P.V. VALVE
1 LB. PRESSURE
8 OZ. VACUUM | | |



RCT-12, RCT-12A, RCT-12B, RCT-12C, RCT-12D
 RCT-12, RCT-12A, RCT-12B, RCT-12C, RCT-12D
 198" x 36" x 1/2" Double Skin Tank Straps
 For additional information, please refer to the
 Typical RCT Design - WCCB
 Date: 07/17/2015